



EcoBlu

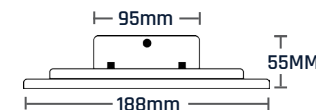
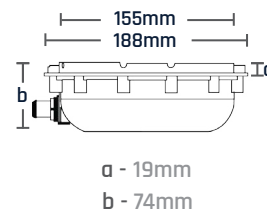
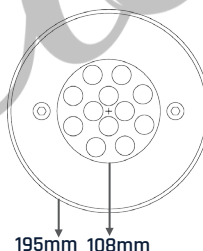
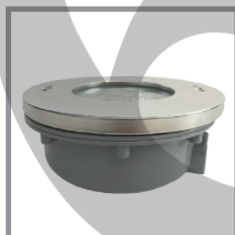
Recess Pool Light

LED HL-18 series

When you installed the EcoBlu Recess Pool LED HL-18 series in a poolscape, the poolside will be revamped to a modern and higher standard atmosphere. The LED Light is made by IP68 waterproof rating and 316 stainless steel for the exterior shell.

EcoBlu LED HL-18 series is suitable for concrete pool application. This housing type installation recess concrete. This series design is using low energy consumption with the best solution for you to save the electrical energy and at the same time generates a high power lumination. The LED Light comes with 3 meter long connecting cable.

Temperature Water	5°C ~ 40°C
Lens Material	Tempered Glass
Suitable For	Concrete & Hot Spring Pools
Lifetime	≥ 30,000 Hours
Energy Efficiency	80%



Model	Code	Material	LED Quantity	Voltage	Watt	Cable	Water-Proof Protection	Colour	Luminouse	Colour Temperature	Angle Area
HL-18	L-3053	316 Stainless Steel	12* x 1.5w	AC/DC12V	18w	3m	IP68	Warm White	1700	2955K (150±)	45°
HL-18	L-3053	316 Stainless Steel	12* x 1.5w	AC/DC12V	18w	3m	IP68	White	1741	6527K (150±)	45°