



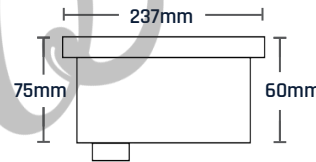
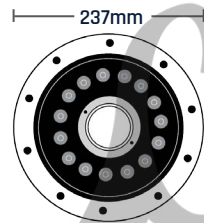
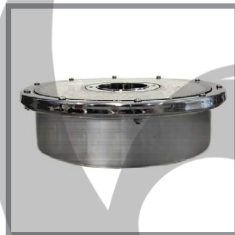
EcoBlu®

Fountain Light

LED NF-15F series

EcoBlu NF-15F lighting series has high-quality stainless steel to provide a fantastic light effect and incomparable low power consumption in your fountain design.

Adding the EcoBlu LED to your fountain can increase the value of your home as well as provide a place of relaxation.



Temperature Water	5°C ~ 40°C
Lens Material	Tempered Glass
Suitable For	Fountain
Lifetime	≥ 30,000 Hours
Energy Efficiency	80%

Model	Code	Material	LED Quantity	Voltage	Watt	Cable	Water-Proof Protection	Colour	Luminous	Nozzle Inlet	Colour Temperature	Wavelength	Angle Area
NF-15F	L-3112	304 Stainless Steel	15*	AC/12~24V	15w	5m	IP68	Warm White	1350	50mm	3060K (150±)	-	30°
NF-15F	L-3112	304 Stainless Steel	15*	AC/12~24V	15w	5m	IP68	White	1425	50mm	6300K (150±)	-	30°
NF-15F	L-3112	304 Stainless Steel	15*	AC/12~24V	15w	5m	IP68	Blue	975	50mm	-	465K (150±)	30°
NF-15F	L-3112	304 Stainless Steel	15*	AC/12~24V	15w	5m	IP68	RGB	750	50mm	-	22150K (150±)	30°